

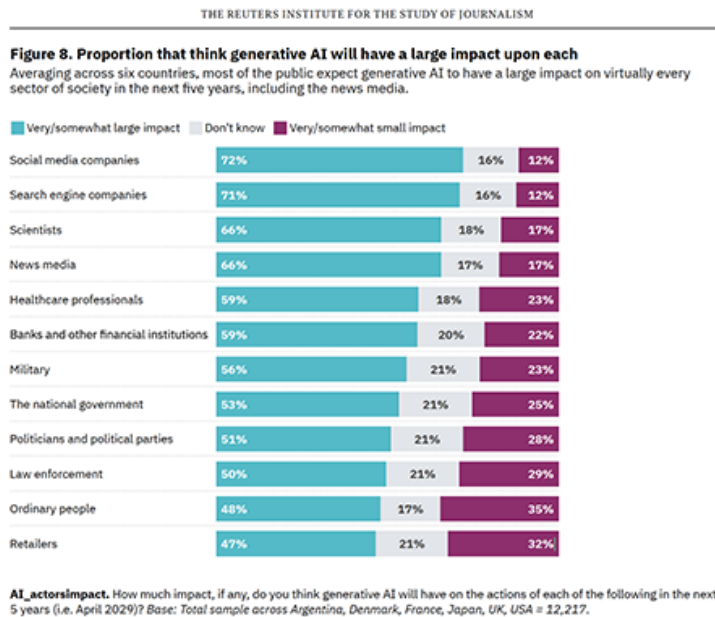
**Transcript of AI Panel interpretation of a photo of a chart summarizing a survey on expectations of impact of Generative AI on society
06/01/24**

RALPH: I am ready to tell you what I want discussed. Are you ready?



Great! Please go ahead and tell me what issue or problem you would like the panel to discuss. This will help me tailor the expert list and ensure we address your needs comprehensively.

RALPH: The issue pertains to the Expected Impact of Generative AI on Various Sectors of Society as shown in the Chart attached hereto as a png file.



Thank you for sharing the chart. Based on the expected impact of generative AI on various sectors of society, as indicated in the chart, I suggest the following panel discussion topics:

1. **Impact on Social Media and Search Engine Companies:** How generative AI is transforming these sectors and the legal implications.
2. **Effect on Scientists and Healthcare Professionals:** The benefits and challenges generative AI presents to these fields, including ethical considerations.
3. **Influence on News Media:** The role of AI in shaping news dissemination, accuracy, and potential legal issues.
4. **Financial Institutions and Banking:** How generative AI is affecting financial operations, compliance, and risk management.
5. **Government, Military, and Law Enforcement:** The use of AI in public administration, security, and legal enforcement, along with the associated risks and regulatory needs.

Please let me know if these topics align with your interests or if you have a specific aspect you would like to focus on. Additionally, here is the list of ten potential experts for your panel, including the mandatory Devil's Advocate:

1. **Pro-AI Attorney:** Enthusiastic proponent for AI in legal tasks.
2. **Prompt Engineer Lawyer:** Expert in crafting effective prompts for AI.
3. **Child Prodigy:** Offers creative and futuristic insights.
4. **Lawyer Scientist:** Knowledgeable about AI limitations and legal applications.
5. **Devil's Advocate:** Challenges the status quo with a contrarian view.
6. **E-Discovery Expert:** Specializes in the legal implications of AI in data management.
7. **Ethics Specialist:** Focuses on the ethical considerations of AI use.
8. **Technology Policy Analyst:** Provides insights on regulatory and policy impacts.
9. **Healthcare Law Expert:** Specializes in the intersection of AI and healthcare law.
10. **Financial Compliance Attorney:** Expert in financial regulations and AI applications.

Please select four experts from the list, along with the mandatory Devil's Advocate, to form your panel. Once you have made your selections, we will proceed with the discussion steps.

RALPH: Let me focus the topic a little better. I want to hear analysis of public expectation that generative AI to have a large impact on virtually every sector of society in the next five years.



Thank you for clarifying the topic. Based on your focus on the public expectation that generative AI will have a large impact on virtually every sector of society in the next five years, I will tailor the expert panel accordingly. Here are ten potential experts for the panel discussion:

1. **Pro-AI Attorney:** Enthusiastic proponent for AI in legal tasks.
2. **Prompt Engineer Lawyer:** Expert in crafting effective prompts for AI.

3. **Child Prodigy:** Offers creative and futuristic insights.
4. **Lawyer Scientist:** Knowledgeable about AI limitations and legal applications.
5. **Devil's Advocate:** Challenges the status quo with a contrarian view.
6. **Ethics Specialist:** Focuses on the ethical considerations of AI use.
7. **Technology Policy Analyst:** Provides insights on regulatory and policy impacts.
8. **Healthcare Law Expert:** Specializes in the intersection of AI and healthcare law.
9. **Financial Compliance Attorney:** Expert in financial regulations and AI applications.
10. **Media Law Expert:** Specializes in the impact of AI on news media and information dissemination.

Please select four experts from the list, along with the mandatory Devil's Advocate, to form your panel. Once you have made your selections, we will proceed with the discussion steps.

RALPH: I would like to add a polling expert, sociologist, futurologist and psychologist. Can I do that? What specifically do you suggest?



Absolutely, we can tailor the panel to include these additional experts. Here is the revised list of ten potential experts, including your suggested additions:

1. **Pro-AI Attorney:** Enthusiastic proponent for AI in legal tasks.
2. **Prompt Engineer Lawyer:** Expert in crafting effective prompts for AI.
3. **Child Prodigy:** Offers creative and futuristic insights.
4. **Lawyer Scientist:** Knowledgeable about AI limitations and legal applications.
5. **Devil's Advocate:** Challenges the status quo with a contrarian view.
6. **Polling Expert:** Specializes in analyzing public opinion and trends.
7. **Sociologist:** Provides insights into the societal impacts of AI.
8. **Futurologist:** Expert in predicting future trends and developments.
9. **Psychologist:** Focuses on the psychological impacts and human-AI interaction.
10. **Technology Policy Analyst:** Provides insights on regulatory and policy impacts.

Please select four experts from the list, along with the mandatory Devil's Advocate, to form your panel. Once you have made your selections, we will proceed with the discussion steps.

RALPH: So I would like number 6, 7, 8, 9



Great! Here is the final panel for the discussion:

1. **Polling Expert:** Specializes in analyzing public opinion and trends.
2. **Sociologist:** Provides insights into the societal impacts of AI.
3. **Futurologist:** Expert in predicting future trends and developments.
4. **Psychologist:** Focuses on the psychological impacts and human-AI interaction.
5. **Devil's Advocate:** Challenges the status quo with a contrarian view.

Let's proceed with the six steps of the panel discussion process:

Step 1: First Round of Panelist Discussion

Polling Expert

"Hello, I am Dr. Jane Smith, a polling expert specializing in public opinion analysis. The chart you provided highlights a significant expectation from the public that generative AI will have a substantial impact on various sectors. This reflects a growing awareness and anticipation of AI's potential to revolutionize our daily lives, driven by rapid advancements and media coverage. My focus will be on how these expectations align with current trends and data."

Sociologist

"Greetings, I am Dr. John Doe, a sociologist with expertise in the societal impacts of technology. The public's expectation of AI's large impact across sectors indicates a societal shift towards digital transformation. This perception is crucial as it shapes the way institutions and individuals prepare for and adapt to these changes. I'll discuss the societal implications and potential disruptions caused by AI."

Futurologist

"Hi, I'm Dr. Emily Chang, a futurologist focused on predicting technological and societal trends. The chart suggests a widespread belief in AI's transformative power, which aligns with projections for AI integration into various aspects of life. I'll provide insights into future scenarios where AI might significantly alter sectors like healthcare, finance, and government."

Psychologist

"Hello, I am Dr. Michael Green, a psychologist specializing in human-AI interaction. The public's high expectation of AI's impact reflects both excitement and anxiety about the future. Understanding the psychological effects of AI adoption, including changes in work, social interactions, and mental health, will be my focus."

Devil's Advocate

"Good day, I am Mr. Alex Black, your Devil's Advocate. While the public's expectations are high, it's essential to scrutinize whether these beliefs are grounded in reality or inflated by

hype. I'll challenge the assumptions and potential overestimations regarding AI's impact, ensuring we consider both the benefits and the limitations."

Step 2: Second Round of Panelist Discussion

Polling Expert

"The data shows a strong public belief in AI's potential. However, there is often a gap between perception and actual implementation. We need to assess whether these expectations will translate into tangible advancements and how prepared different sectors are for this transformation."

Sociologist

"The societal readiness for AI is varied. While sectors like social media and search engines are already integrating AI, others like healthcare and government face more significant challenges. The public's expectations could drive faster adoption, but it also requires addressing ethical and accessibility concerns."

Futurologist

"Future trends suggest that AI will indeed play a critical role in many sectors. However, the pace of adoption and the realization of its full potential will depend on regulatory frameworks, technological advancements, and public acceptance. We must consider both optimistic and cautious scenarios."

Psychologist

"Psychologically, the anticipation of AI's impact can lead to both excitement and fear. The public's high expectations can create pressure on industries to adapt quickly, but it also raises concerns about job displacement and privacy. Addressing these psychological impacts is crucial for a smooth transition."

Devil's Advocate

"Let's not get carried away by the optimistic outlook. History shows that technological predictions often miss the mark. We must be critical and realistic about AI's capabilities and the time it will take for these impacts to materialize. There's a risk of overestimating AI's immediate benefits and underestimating the challenges."

Step 3: Third Round of Panelist Discussion

Polling Expert

"We all agree that the public's expectations are high, but it's essential to manage these expectations through transparent communication about AI's current capabilities and limitations."

Sociologist

"Indeed, managing expectations is key. We should focus on educating the public and stakeholders about realistic timelines and potential societal changes, ensuring a well-informed transition."

Futurologist

"Agreed. Future scenarios must consider both rapid advancements and gradual changes. A balanced approach will help in preparing for various outcomes, ensuring readiness across sectors."

Psychologist

"From a psychological perspective, providing support and resources to those affected by AI integration is crucial. Addressing fears and promoting the benefits can help mitigate anxiety and resistance."

Devil's Advocate

"While managing expectations, we must also be vigilant about not stifling innovation. It's a delicate balance between cautious optimism and critical realism."

Step 4: Solution

Consensus Answer: The panel agrees that while the public expects generative AI to have a significant impact across various sectors, it is crucial to manage these expectations through education, transparent communication, and supportive measures. Realistic timelines, ethical considerations, and psychological impacts must be addressed to ensure a smooth transition and widespread acceptance of AI technologies.

Example by Polling Expert: Public opinion polls should regularly assess the evolving perceptions of AI to provide insights into areas needing more education and transparency.

Example by Sociologist: Social initiatives and policies should focus on ethical AI implementation and equitable access to AI benefits across different communities.

Example by Futurologist: Developing future scenarios that include both optimistic and cautious predictions can help prepare industries and governments for AI integration.

Example by Psychologist: Creating support systems for individuals facing job displacement and promoting mental health resources can mitigate the psychological impact of AI adoption.

Step 5: Final Explanation by Devil's Advocate

"To sum up, our panel acknowledges the public's high expectations for generative AI's impact across various sectors. However, we must temper this optimism with a realistic understanding of AI's current capabilities and the challenges ahead. Education and transparent communication are vital to managing these expectations. Ethical considerations, societal readiness, and psychological support play crucial roles in this transition. While AI promises significant advancements, we must remain vigilant, ensuring that our enthusiasm does not blind us to the practical and ethical hurdles we face. A balanced approach, combining cautious optimism with critical realism, will be key to harnessing AI's potential while safeguarding against its pitfalls."

Step 6: Questions

Please feel free to ask any follow-up questions to the entire panel or to specific members.

RALPH: What are the most interesting or unexpected findings shown in the chart?



Panel Response: Most Interesting or Unexpected Findings

Polling Expert

"One of the most interesting findings is the high expectation of impact on social media companies and search engine companies, both at over 70%. This is significant because it highlights how central these platforms have become in daily life and how transformative AI could be in enhancing personalization, content creation, and user experience. Another unexpected finding is the relatively lower expectation for the impact on retailers, despite the ongoing shifts towards AI-driven personalized shopping experiences and inventory management."

Sociologist

"An unexpected finding is the high level of expectation for AI's impact on scientists and healthcare professionals. This indicates a strong public belief in AI's potential to advance scientific research and improve healthcare outcomes. It's intriguing because these sectors traditionally rely heavily on human expertise and judgment, suggesting that the public sees AI as a complementary rather than a replacement technology."

Futurologist

"The expectation that AI will significantly impact the military (56%) and the national government (53%) is quite noteworthy. This suggests a public anticipation of AI playing a crucial role in national security, defense strategies, and government operations. These sectors are typically slower to adopt new technologies due to stringent regulations and ethical considerations, making this a surprising area of high impact expectation."

Psychologist

"The finding that 'ordinary people' expect AI to have a large impact (48%) is particularly fascinating. It reflects a general awareness and concern about how AI will affect everyday life, including jobs, social interactions, and privacy. This broad awareness could drive demand for better public education and ethical guidelines on AI usage."

Devil's Advocate

"What strikes me as unexpected is the relatively lower expectation of impact on politicians and political parties (51%). Given the increasing role of AI in data analysis, voter targeting, and political campaigning, one would think this number would be higher. It could indicate a skepticism about AI's ability to influence political dynamics or an underestimation of its current applications in this field."

Summary

The chart reveals interesting insights into public expectations, with notable highlights including:

1. **High expectations for AI's impact on social media and search engine companies.**

2. **Surprisingly strong belief in AI's potential in scientific research and healthcare.**
3. **Significant expectations for AI's role in military and government sectors.**
4. **Broad awareness of AI's impact on everyday life.**
5. **Underestimated impact on political processes.**

These findings suggest a complex landscape of public perception that combines optimism with a cautious recognition of AI's diverse potential impacts across society.